



Application

- Small electrical irrigation and drainage equipments
- Particularly applied in urban well water pumping, field irrigation and drainage, garden irrigation and household water supply, as well as drainage of industrial accumulated water, water supply and drainage for construction, livestock breeding, etc.

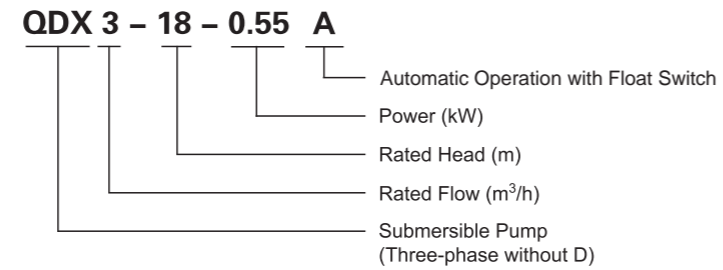
Pump

- Cast iron pump body under special anti-rust treatment
- Max. immersion depth: 5 m
- Max. liquid temperature: +40°C
- Liquid pH value: 6.5 – 8

Motor

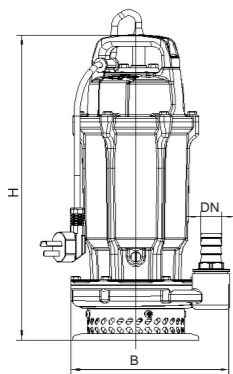
- Copper winding
- Built-in thermal protector
- Stainless steel welded shaft
- Insulation class: B
- Protection class: IP68

Identification Codes



Technical Data

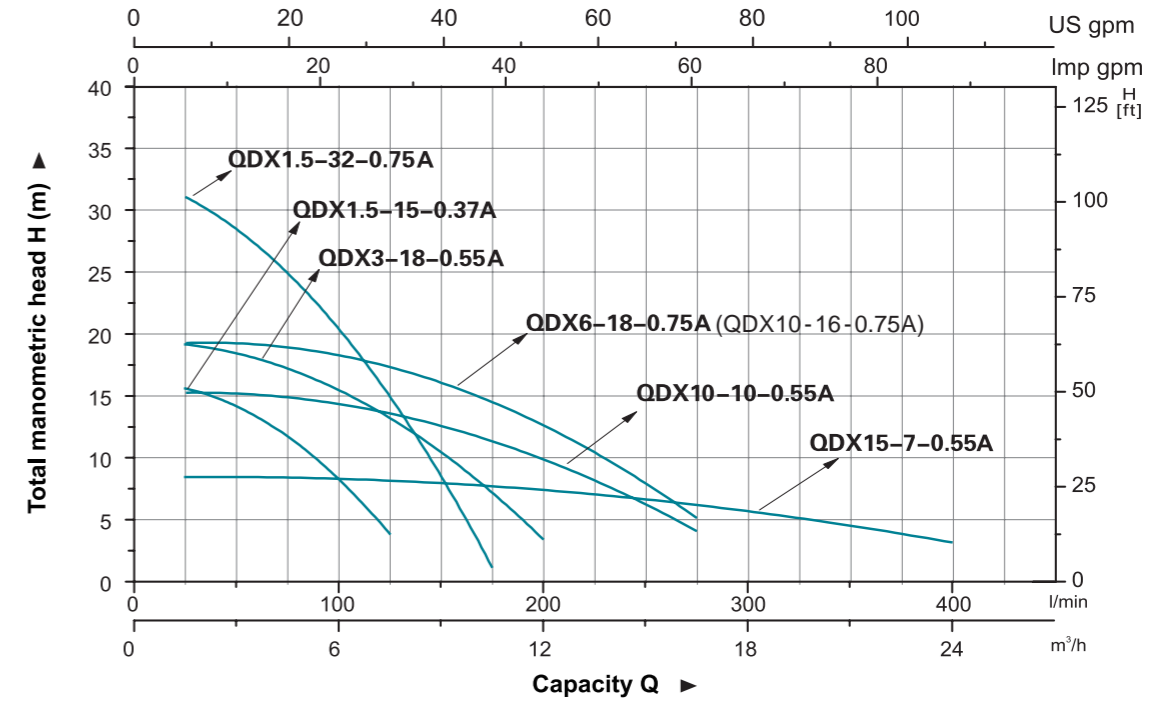
Model	Q (m ³ /h)		0		1.5		3		4.5		6		7.5		9		10.5		12		13.5		15		16.5		18		19.5		21		22.5		24	
	Q (l/min)	H (m)	0	25	50	75	100	120	150	175	200	225	250	275	300	325	350	375	400	-	-	-	-	-	-	-	-	-	-	-	-	-	-	-	-	-
QDX1.5-15-0.37A	16	15.6	14.2	11.8	8	3.9	-	-	-	-	-	-	-	-	-	-	-	-	-	-	-	-	-	-	-	-	-	-	-	-	-	-	-	-	-	-
QDX3-18-0.55A	19.2	19.2	18.5	17.5	15.5	13.2	10	7	3.7	-	-	-	-	-	-	-	-	-	-	-	-	-	-	-	-	-	-	-	-	-	-	-	-	-	-	-
QDX10-10-0.55A	15.3	15.2	15	14.8	14.4	13.5	12.5	11.3	10	8.5	6.3	3.8	-	-	-	-	-	-	-	-	-	-	-	-	-	-	-	-	-	-	-	-	-	-	-	-
QDX15-7-0.55A	8.6	8.5	8.4	8.3	8.2	8	7.8	7.6	7.4	7.2	6.8	6.3	5.8	5.2	4.5	3.8	3	-	-	-	-	-	-	-	-	-	-	-	-	-	-	-	-	-	-	-
QDX1.5-32-0.75A	32.5	31.5	28.5	24.5	20	15.5	8.5	1	-	-	-	-	-	-	-	-	-	-	-	-	-	-	-	-	-	-	-	-	-	-	-	-	-	-	-	-
QDX6-18-0.75A	19.5	19.2	19	18.6	18	17	16.2	14.7	12.8	11	8.6	4.2	-	-	-	-	-	-	-	-	-	-	-	-	-	-	-	-	-	-	-	-	-	-	-	-
QDX10-16-0.75A	19.5	19.2	19	18.6	18	17	16.2	14.7	12.8	11	8.6	4.2	-	-	-	-	-	-	-	-	-	-	-	-	-	-	-	-	-	-	-	-	-	-	-	-



Dimension

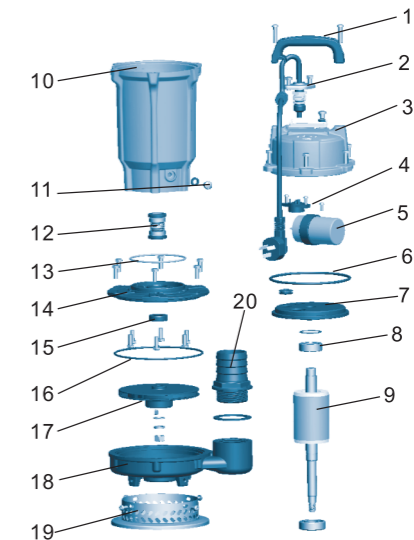
Model	DN	H (mm)	B (mm)
QDX1.5-15-0.37A	25	195	145
QDX3-18-0.55A	25	205	160
QDX10-10-0.55A	50	215	150
QDX15-7-0.55A	50	240	170
QDX1.5-32-0.75A	25	245	195
QDX6-18-0.75A	40	220	160
QDX10-16-0.75A	40	220	160

Hydraulic Performance Curves



Materials Table

No.	Part	Material
1	Handle	PP
2	Cable	
3	Top cover	HT200
4	Protector	
5	Capacitor	
6	O-ring	NBR
7	Upper cover	HT200
8	Bearing	
9	Rotor	
10	Stator	
11	Oil injection screw	
12	Mechanical seal	Carbon/Ceramic
13	O-ring	NBR
14	Cover of oil cylinder	HT200
15	Oil seal	
16	O-ring	NBR
17	Impeller	PPO ZL102
18	Pump body	HT200
19	Filter screen	Stainless steel
20	Outlet connector	PP



Package Information

Model	GW (Kgs)	L (mm)	W (mm)	H (mm)	Quantity (PCS/20 TEU)
QDX1.5-15-0.37A	11.5	392	224	180	1788
QDX3-18-0.55A	14.5	415	230	205	1388
QDX10-10-0.55A	14.5	415	230	205	1388
QDX15-7-0.55A	15.5	420	280	215	1132
QDX1.5-32-0.75A	16.5	435	250	235	1062
QDX6-18-0.75A	15.5	415	230	205	1388
QDX10-16-0.75A	15.5	415	230	205	1388





Application

- Small electrical irrigation and drainage equipments
- Particularly applied in urban well water pumping, field irrigation and drainage, garden irrigation and household water supply, as well as drainage of industrial accumulated water, water supply and drainage for construction, livestock breeding, etc.

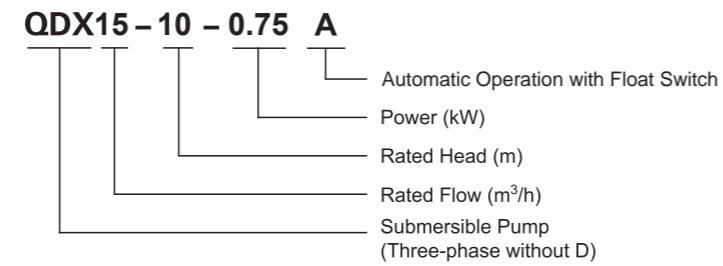
Pump

- Cast iron pump body under special anti-rust treatment
- Max. immersion depth: 5 m
- Max. liquid temperature: +40°C
- Liquid pH value: 6.5 – 8

Motor

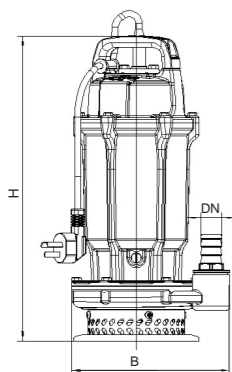
- Copper winding
- Built-in thermal protector
- Stainless steel welded shaft
- Insulation class: B
- Protection class: IP68

Identification Codes



Technical Data

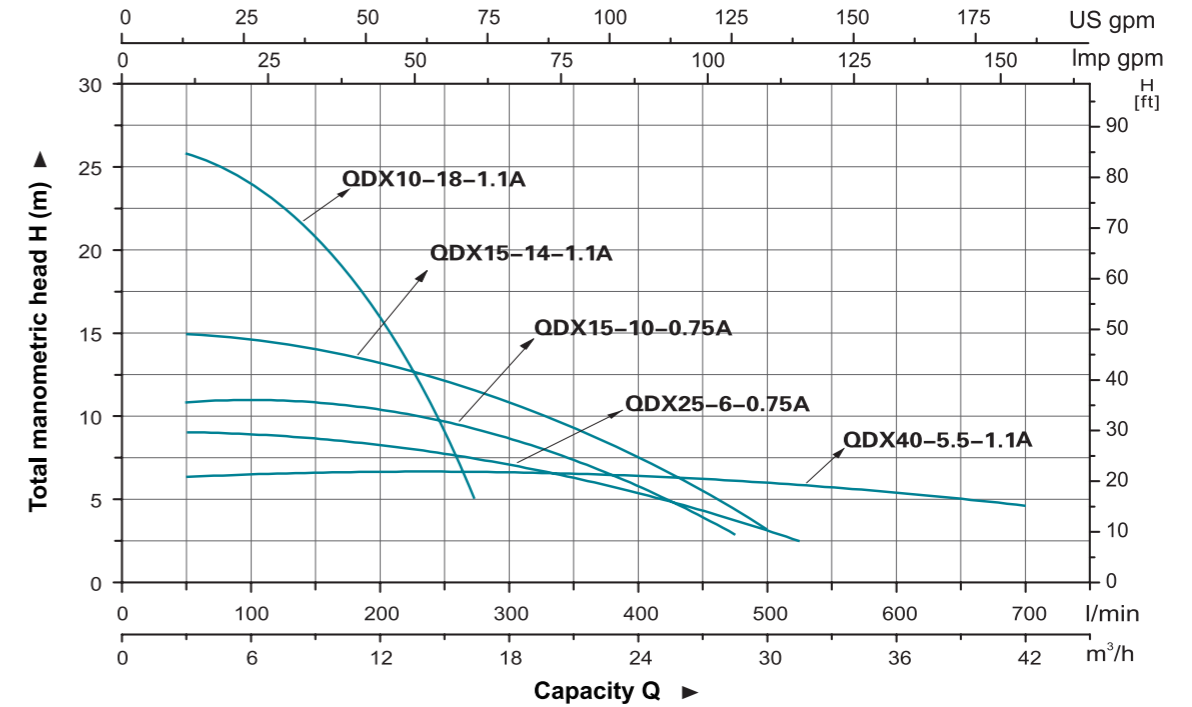
Model	Q (m ³ /h)																												
	0	1.5	3	4.5	6	7.5	9	10.5	12	13.5	15	16.5	18	19.5	21	22.5	24	25.5	27	28.5	30	31.5	33	34.5	36	37.5	39	40.5	
QDX15-10-0.75A	11	10.9	10.8	10.7	10.6	10.5	10.4	10.3	10.2	10.1	10	9.6	9.2	8.5	7.6	6.5	5.6	4.7	3.8	2.7	-	-	-	-	-	-	-	-	-
QDX25-6-0.75A	9.3	9.2	9.1	9	8.9	8.7	8.5	8.3	8	7.7	7.5	7.2	6.8	6.6	6.4	6.2	6	5.8	4.8	4	2.6	1.5	-	-	-	-	-	-	-
QDX10-18-1.1A	25.8	25.5	25	24.6	24	22.8	21.2	18.5	16	13.2	9	4	-	-	-	-	-	-	-	-	-	-	-	-	-	-	-	-	-
QDX15-14-1.1A	15	14.9	14.8	14.7	14.6	14.5	14.3	14.2	14	13.9	13.8	13.2	12.5	11.5	10.6	9.5	8	6.7	5.5	4.4	3.1	-	-	-	-	-	-	-	-
QDX40-5.5-1.1A	6.1	6.2	6.3	6.4	6.5	6.5	6.7	6.8	6.7	6.7	6.65	6.6	6.6	6.6	6.5	6.5	6.4	6.2	6.1	6	5.9	5.8	5.7	5.6	5.5	5.4	5.3	5.2	



Dimension

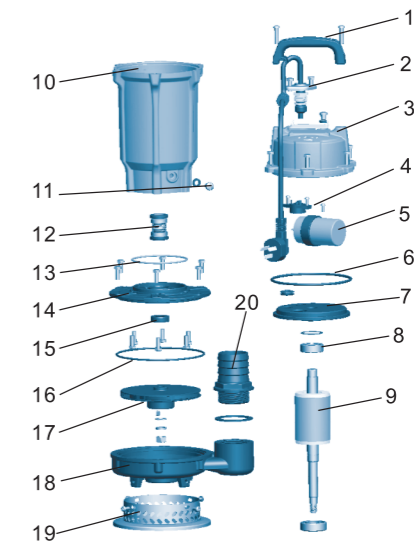
Model	DN	H (mm)	B (mm)
QDX15-10-0.75A	50	240	170
QDX25-6-0.75A	65	250	160
QDX10-18-1.1A	50	270	190
QDX15-14-1.1A	65	270	180
QDX40-5.5-1.1A	80	270	195

Hydraulic Performance Curves



Materials Table

No.	Part	Material
1	Handle	PP
2	Cable	
3	Top cover	HT200
4	Protector	
5	Capacitor	
6	O-ring	NBR
7	Upper cover	HT200
8	Bearing	
9	Rotor	
10	Stator	
11	Oil injection screw	
12	Mechanical seal	Carbon/Ceramic
13	O-ring	NBR
14	Cover of oil cylinder	HT200
15	Oil seal	
16	O-ring	NBR
17	Impeller	PPO ZL102
18	Pump body	HT200
19	Filter screen	Stainless steel
20	Outlet connector	PP



Package Information

Model	GW (Kgs)	L (mm)	W (mm)	H (mm)	Quantity (PCS/20 TEU)
QDX15-10-0.75A	16.5	420	280	215	1132
QDX25-6-0.75A	17.5	420	280	215	1132
QDX10-18-1.1A	22	452	300	240	855
QDX15-14-1.1A	22	452	300	240	855
QDX40-5.5-1.1A	22.5	490	295	235	792

