



Application

- Can be used to transfer clean water or other liquids similar to water in physical and chemical properties
- Suitable for small living water supply, automatic water sprinkler system, small air conditioner system or supporting equipment etc.

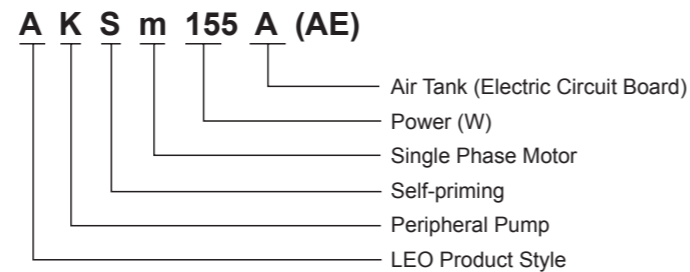
Pump

- Self-priming Peripheral Pump
- Brass impeller
- Brass pump bonnet
- AISI 304 shaft
- 3 second time delay of pump start after plugging into the socket to avoid potential danger caused by electric sparks
- Automatic pressure sensor inside
- Automatic switching to small flow control system in condition of small water flow
- Automatic stop in 6 minutes in case of no water inside
- Max. liquid temperature: +40
- Max. suction: +8 m
- Liquid pH value: 6.5 – 8.5

Motor

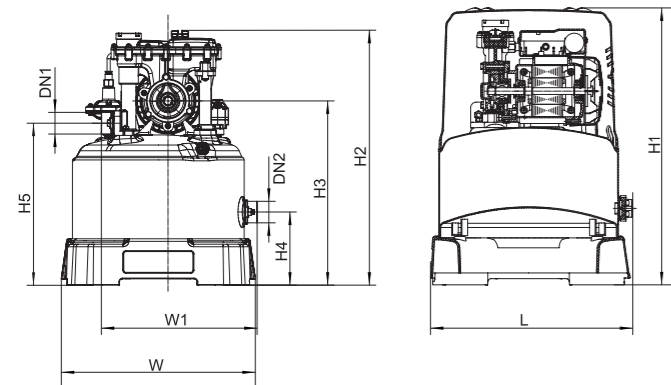
- IE 2 motor for energy saving
- C&U bearing
- Copper winding
- Built-in thermal protector
- Low voltage operation with power design of 180V - 220V/50 Hz

Identification Codes



Technical Data

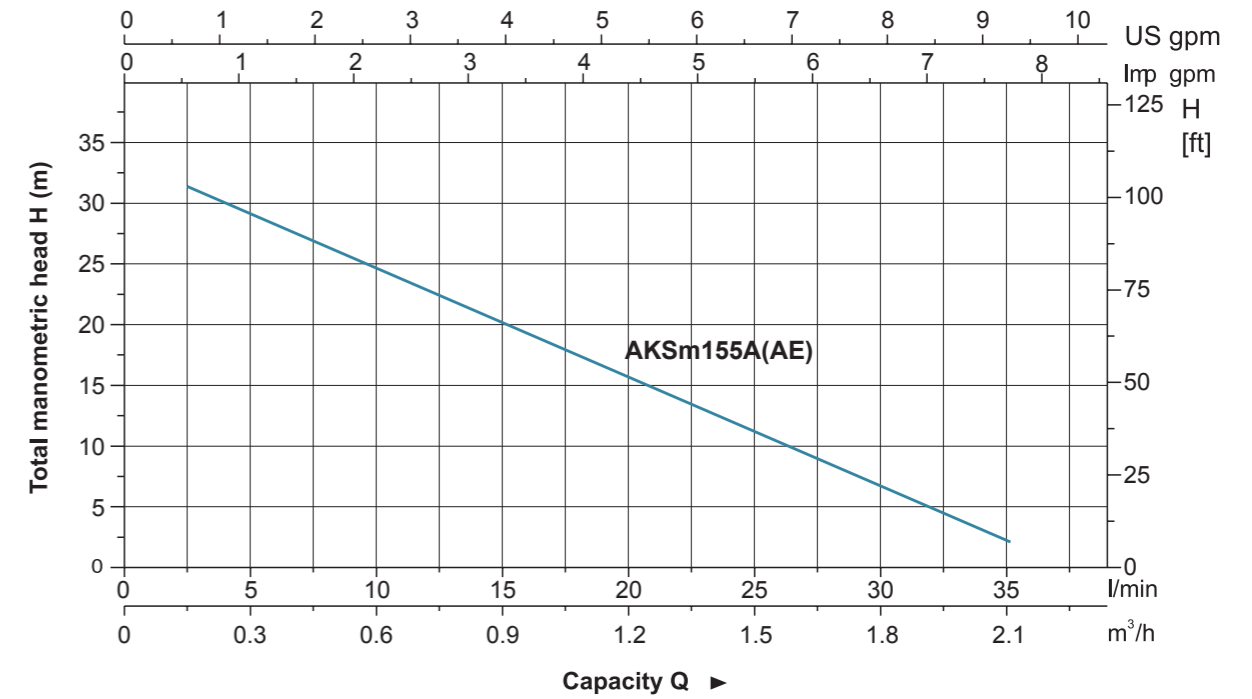
MODEL	POWER		Q (m ³ /h)	0	0.3	0.6	0.9	1.2	1.5	1.8	2.1
	kW	HP									
AKSm155A (AE)	0.155	0.2	H(m)	32	30	26	22	17	12	7	2



Dimension

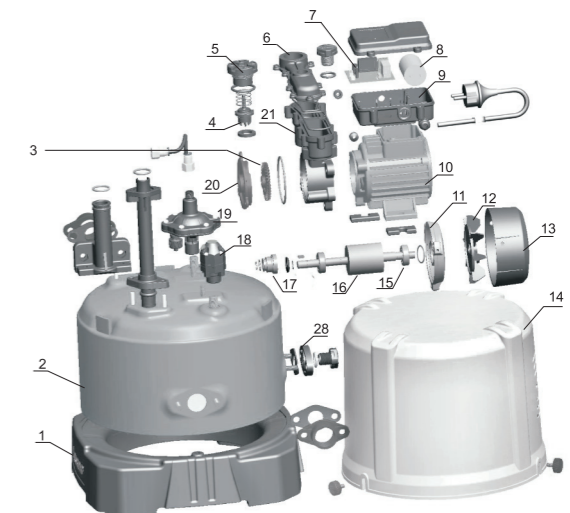
Model	DN1	DN2	L (mm)	W (mm)	W1 (mm)	H1 (mm)	H2 (mm)	H3 (mm)	H4 (mm)	H5 (mm)
AKSm155A (AE)	1"	1"	355	360	288	490	470	342	135	300

Hydraulic Performance Curves



Materials Table

No.	Part	Material
1	Base	PP
2	Tank	Steel (ST12)
3	Impeller	Brass
4	Non-return valve	PPO
5	Pump head cover	PA66
6	Pump head	POM
7	Circuit board	
8	Capacitor	
9	Terminal box	ABS
10	Stator	
11	Rear cover	ZL102
12	Fan	PP
13	Fan cover	PP
14	Housing	PP
15	Bearing	
16	Rotor	
17	Mechanical seal	Carbon/Ceramic
18	Pressure switch	
19	Air charger	
20	Pump bonnet	Brass
21	Pump body	POM



Package Information

Model	GW (Kgs)	L (mm)	W (mm)	H (mm)	Quantity (PCS/20' TEU)
AKSm155A (AE)	13.6	405	405	530	320

